

ICRU CONCEPT

DR KANHU CHARAN PATRO



*International Commission on
Radiation Units and Measurements, Inc.*

ACTIVITY

EXPOSURE

ABSORBED DOSE

TISSUE MODIFYING FACTOR



ACTIVITY

ACTIVITY

THE EMISSION OF IONIZING
RADIATION OR PARTICLES CAUSED
BY THE SPONTANEOUS
DISINTEGRATION OF ATOMIC NUCLEI

ci/Kci/Bq

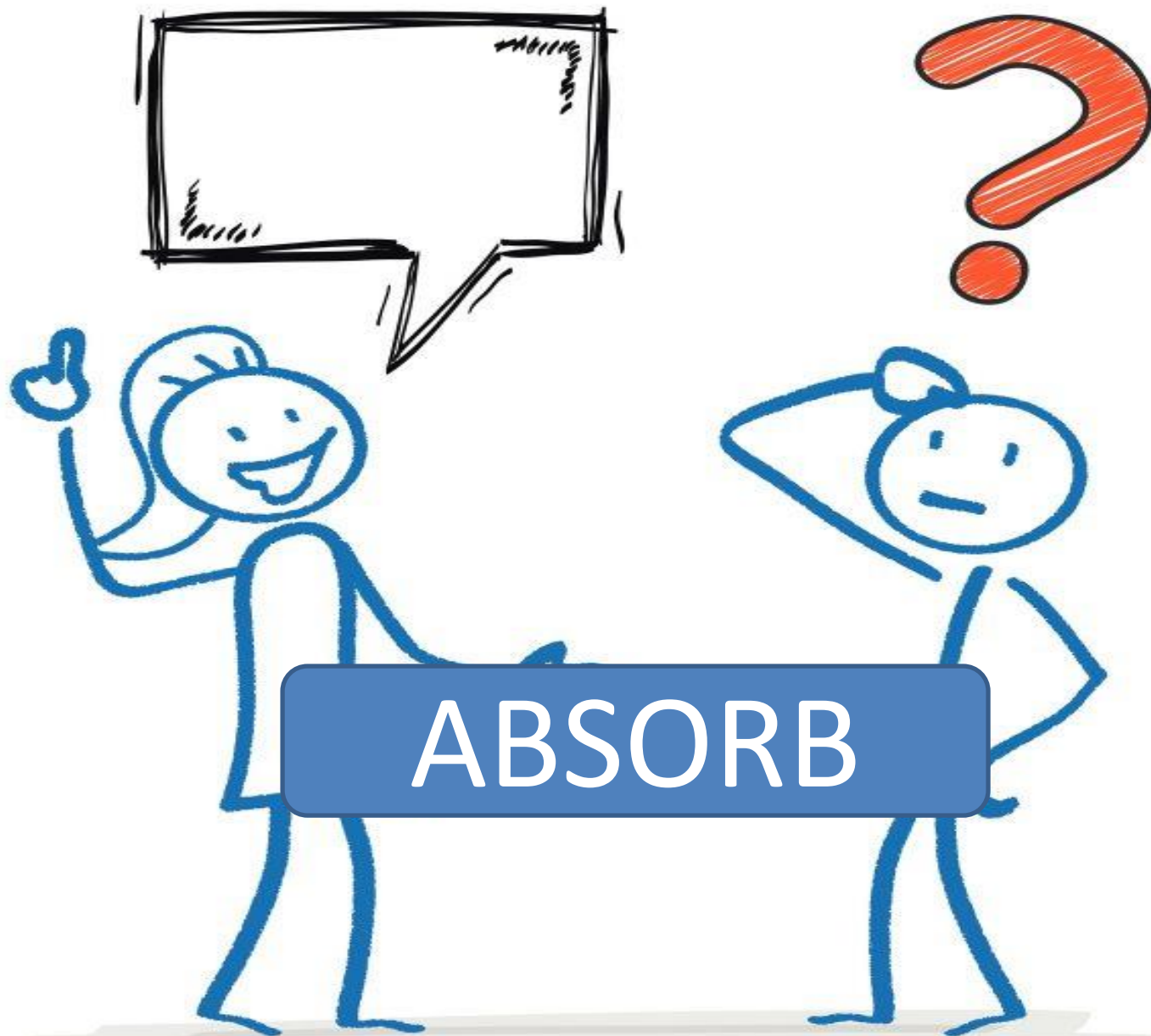


EXPOSURE

EXPOSURE

EXPOSURE OF X-RAYS AND GAMMA RAYS. IT IS DEFINED AS THE ELECTRIC CHARGE FREED BY SUCH RADIATION IN A SPECIFIED VOLUME OF AIR DIVIDED BY THE MASS OF THAT AIR

rontgen



ABSORBED DOSE

The quantity of ionizing radiation absorbed by a body, measured (usually in Grays) as the energy absorbed per unit mass

rad/Gy



TISSUE MODIFYING FACTOR

RELATIVE SENSITIVE OF
DIFFERENT TISSUES AND
ORGANS AFTER EXPOSED
TO RADIATION

rem/sv

I

C

R

U

Radiation Units

There are a number of units to measure radiation dose and exposure:

- **rad or radiation absorbed dose**

The amount of radiant energy absorbed in a certain amount of tissue.

- **gray (Gy)**

A unit of absorbed radiation equal to the dose of one joule of energy absorbed per kilogram of matter, or 100 rad. The unit is named for the British physician L. Harold Gray (1905-1965), an authority on the use of radiation in the treatment of cancer.

- **milligray (mGy)**

A unit of absorbed radiation equal to one thousandth of a gray, or 0.1 rad.

- **rem or roentgen-equivalent-man**

A unit of measurement that takes into account different biological responses to different kinds of radiation. The radiation quantity measured by the rem is called equivalent dose.

- **millirem**

One thousandth of a rem, the unit for measuring equivalent dose.

- **roentgen (R, r)** (*rent-gen, rent-chen*)

The international unit of exposure dose for x-rays or gamma rays. Roentgens are named after Professor Wilhelm Konrad Roentgen, the man who discovered x-rays in 1895.

- **sievert (Sv)** (*see-vert*)

The unit for measuring ionizing radiation effective dose, which accounts for relative sensitivities of different tissues and organs exposed to radiation. The radiation quantity measured by the sievert is called effective dose.

- **millisievert (mSv)** (*mill-i-see-vert*)

One thousandth of a sievert, the unit for measuring effective dose.

CGS/SI



konidentalibab.com









Linac Beam



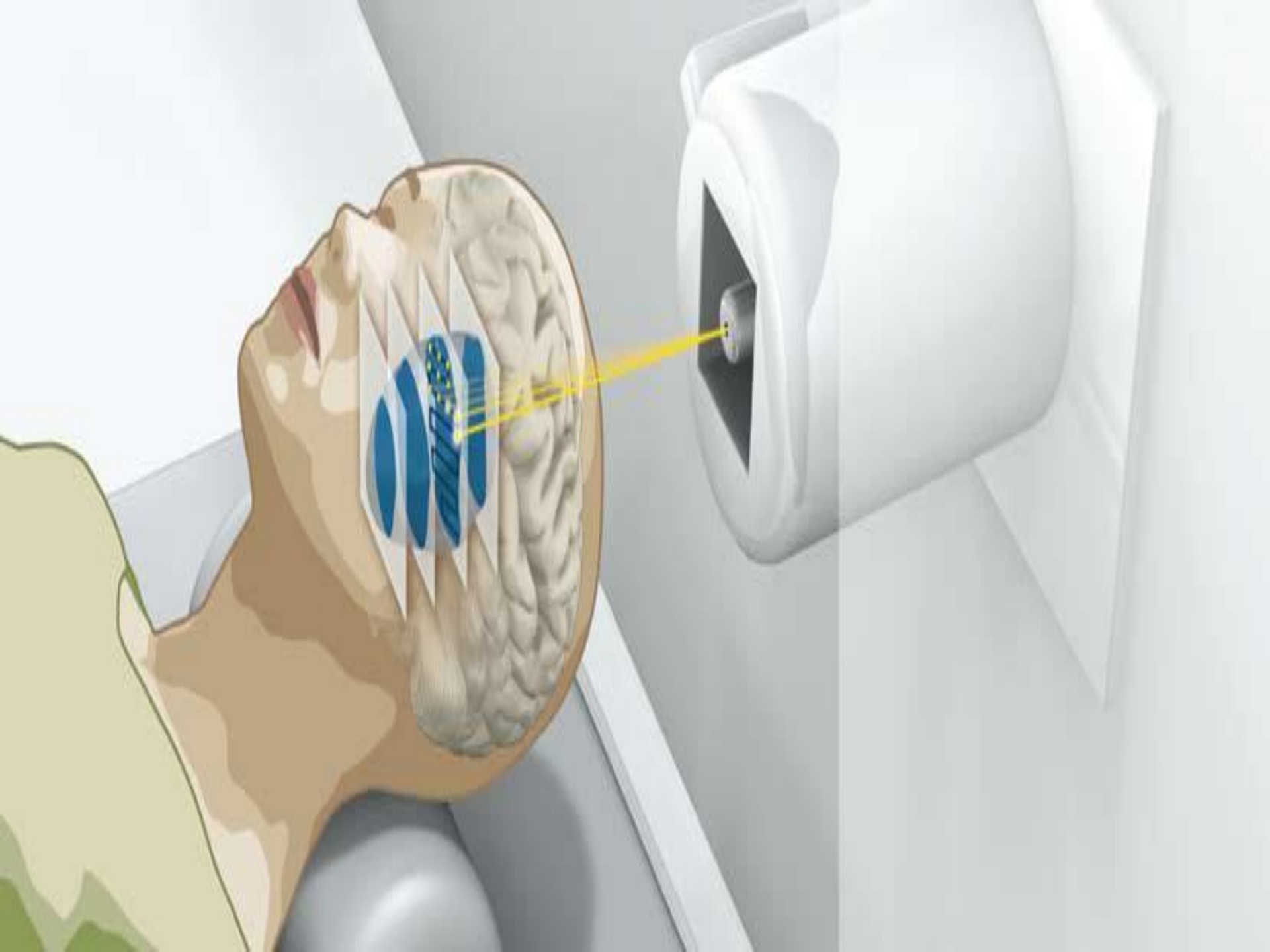












DIAGNOSIS
TREATMENT
MEASUREMENT
INDUSTRY
PROTECTION
INSTRUMENTATION

History

1. The ICRU (**originally known** as the International X-Ray Unit Committee and later as the International Committee for Radiological Units)
2. Was conceived at the First International Congress of Radiology (ICR) in London in 1925 and officially came into being at ICR-2 in Stockholm in 1928.
3. The **primary objective** was to propose a unit for measurement of radiation as applied in medicine. From 1950 the ICRU expanded its role significantly to embrace a wider field.
4. Initially meetings were held **every 3 years at ICR congresses** (excluding the 13-year period encompassing World War II) with one physicist and one radiologist from each participating country having the right of attendance with the Chairman being nominated by the ICR host country.
5. A **permanent Commission** was elected in 1953

WEBSITE



International Commission on
Radiation Units & Measurements

SEARCH

go

[Home](#)[About ICRU](#)[Commissioners](#)[Activities](#)[Reports](#)[Related Orgs](#)[ICRU News](#)[Contact ICRU](#)

About ICRU

For nearly 90 years, ICRU has established international standards for radiation units & measurement.

Current Program ▼

- Diagnostic Radiology & Nuclear Medicine
- Radiation Therapy
- Radiation Protection
- Radiation Science

[Questions?](#) [Comments?](#) »

Reports

ICRU Report 91, Prescribing, Recording, and Reporting of Stereotactic Treatments with Small Photon Beams

ICRU Report 90, Key Data For Ionizing-Radiation Dosimetry: Measurement Standards And Applications

Current Events

90th Anniversary Celebration

ICRU and ICRP to Celebrate Respective 90th Anniversaries in Stockholm

ICRU Timeline 1928 - 2018

Hans Menzel 42nd L.S. Taylor

About ICRU

Mission Statement

To develop and promulgate internationally accepted recommendations on radiation related quantities and units, terminology, measurement procedures, and reference data for the safe and efficient application of ionizing radiation to medical





Administration

The Commission's secretariat is in Stockholm and its legal status is that of British [charity](#) (Not-for-profit organisation).

90th year celebration



Strål
säkerhets
myndigheten

Swedish Radiation Safety Authority



STOCKHOLM

Celebrating 90 Years of Expertise
– Radiation Protection in the Next Decade

Time: 17–18 October, 2018

Radiation quantities

The commission has been responsible for defining and introducing many of **units of measure**. The number of different units for various quantities is indicative of changes of thinking in world metrology, especially the movement from CGS to SI units

SISTER

1. The ICRU is a sister organisation to the [International Commission on Radiological Protection](#) (ICRP).
2. In general terms the ICRU defines the units, and the ICRP recommends how they are used for [radiation protection](#)

AIMS

1. To collect and **evaluate the most relevant** data and information pertinent to the problems of ionizing radiation for inclusion in its reports.
2. To strive to **maintain close contacts** with organizations, professional societies and statutory bodies that benefit from its work.

Principal objective of ICRU

The development of internationally accepted recommendations regarding:

- (1) quantities and units of radiation and radioactivity;
- (2) procedures suitable for the measurement and application of these quantities in diagnostic radiology, radiation therapy, radiation biology, nuclear medicine, radiation protection, and industrial and environmental activities;
- (3) physical data needed in the application of these procedures, the use of which assures uniformity in reporting.

UNIFORM REPORTING

MISSION

To develop and promulgate internationally accepted recommendations on radiation related quantities and units, terminology, measurement procedures, and reference data for the **safe and efficient application of ionizing radiation to medical diagnosis and therapy**, radiation science and technology, and radiation protection of individuals and populations.

BENEFICIARIES

1. Radiation oncologists
2. Radiotherapists,
3. Diagnostic radiologists,
4. Nuclear medicine physicians,
5. Medical physicists,
6. Radiation dosimetrists,
7. Radiation protection practitioners and scientists in research,
8. Industry (including nuclear power) and universities,
9. Regulators,
10. Radiobiologists,
11. Epidemiologists,
12. Emergency preparedness engineers,
13. Environmentalists and
14. Instrument designers

Yearly commission meeting

2017 Annual Commission Meeting [**<2017 Commission Photo>**](#)

The 2017 ICRU Meeting will be held 1-4, April at the Fiesta Inn, Mexico City, Mexico and at Universidad Nacional Autónoma de México

2016 Annual Commission Meeting [**<2016 Commission Photo>**](#)

The 2016 ICRU Meeting was held was held 16-19, April 2016 at the Hotel Quirinale, Rome, Italy and at ENEA, Frascati, Italy

2015 Annual Commission Meeting [**<2015 Commission Photo>**](#)

The 2015 ICRU Meeting was held was held 9-14 May 2015 at Cliniques Universitaires Saint Luc, Brussels, Belgium.

2014 Annual Commission Meeting [**<2014 Commission Photo>**](#)

The 2014 ICRU Meeting was held was held 9-14 May 2014 at ICRU Headquarters, Bethesda, Maryland USA.

Gray medal



GRAY MEDAL

The prestigious Gray Medal was established by the ICRU in 1967. The medal is awarded for outstanding contributions to scientific fields of interest to the ICRU and honors the late Louis Harold Gray, former member and Vice Chairman of the ICRU and eminent medical physicist and radiobiologist. The medal is awarded with a frequency determined by the ICRU and is usually awarded, in rotation, to recipients in the fields of Radiation Oncology, Medical Imaging and Basic Radiation Science. The medal is presented at an appropriate international event where the recipient is invited to give a scientific lecture.

RECIPIENTS

1969 L V Spencer (Radiation Physics)
1975 J W Boag (Radiation Physics)
1977 M M Elkind (Radiobiology)
1981 M Tubiana (Radiation Oncology)
1985 H H Rossi (Radiation Physics)
1989 D Schulte-Frohlinde (Radiation Chemistry)
1995 H R Withers (Radiobiology)
1999 P Lauterbur (Medical Imaging)
2001 H D Suit (Radiation Oncology)

2003 R M Fry (Radiobiology)
2003 M J Berger (Radiation Physics)
2005 C E Metz (Medical Imaging)
2007 E J Hall (Radiation Oncology)
2009 A van der Kogel (Radiobiology)
2011 D T Goodhead (Radiation Science)
2013 W A Kalender (Medical Imaging)
2015 F A Stewart (Radiation Oncology)
2017 C A Mistretta (Radiation Science)

Liaison with other Organizations

[American Association of Physicists in Medicine](#)

[American Society for Radiation Oncology](#)

[Bureau International de Métrologie Légale](#)

[Bureau International des Poids et Mesures](#)

[Canadian Nuclear Safety Commission](#)

[Council for International Organizations of Medical Sciences](#)

[European Association of Nuclear Medicine](#)

[Food and Agriculture Organization of the United Nations](#)

[International Atomic Energy Agency](#)

[International Commission on Radiological Protection](#)

[International Council for Science ICSU](#)

Financial support is provided by the following organizations:

1. American Association of Physicists in Medicine

1. Health Physics Society

1. International Atomic Energy Agency

1. International Radiation Protection Association

1. International Society of Radiology

1. Radiological Society of North America

Report Writing Committees

1. The Commission is assisted by Report Committees working on an adhoc basis to produce draft reports on specific subjects.
2. They may be assisted by consultants.
Commission members, called sponsors, ensure the liaison between committee and Commission

Reports in Preparation

Measurement and Reporting of Radon Exposures

Prescribing, Recording, and Reporting Brachytherapy for Cancer of the Cervix

Key Data Measurement Standards in Dosimetry of Ionizing Radiation

Prescribing, Recording, and Reporting Ion-Beam Therapy

Prescribing, Recording, and Reporting Stereotatic Treatments with Small Photon Beams

Bioeffect Modeling and Equieffective Dose Concepts in Radiation Therapy

Operational Radiation Protection Quantities for External Radiation

Monitoring and Assessment of Radiation Releases to the Environment

MEMBERSHIP

MEMBERSHIP

Since the sixth meeting in 1950 members have been elected to the ICRU by incumbent Commissioners. The Commission is composed of a maximum of 15 members selected for their scientific ability and is widely regarded as one of the foremost panel of experts in radiation medicine and in the other fields of ICRU endeavor. Meetings of the full Commission are held annually.

CURRENT MEMBERS

H-G Menzel (Germany), *Chairman*

P M DeLuca, Jr (USA) *Vice Chairman*

T R Mackie (USA), *Secretary*

S M Bentzen (USA), *Executive Director*

V Grégoire (Belgium), *Executive Director*

J M Boone (USA)

M-E Brandan (Mexico)

A Chiti (Italy)

D T Burns (France)

E Fantuzzi (Italy)

R W Howell (USA)

P Olko (Poland)

B O'Sullivan (Canada)

D Rogers (Canada)

N Saito (Japan)

Recently published reports

- 81 Quantitative Aspects of Bone Densitometry (2009)
- 82 Mammography: Assessment of Image Quality (2009)
- ICRP 110** Adult Reference Computational Phantoms (2009) [with ICRP]
- 83 Prescribing, Recording, and Reporting Photon-Beam Intensity-Modulated Radiation Therapy (IMRT) (2010)
- 84 Reference Data for the Validation of Doses from Cosmic Radiation Exposure of Aircraft Crew (2010) [with ICRP]
- ICRP 116** Dose Conversion Coefficients for Radiological Protection Quantities for External Radiation Exposures (2010) [with ICRP]
- 85a Fundamental Quantities and Units (2011)
- 86 Quantification and Reporting of Low-Dose and other Heterogeneous Exposures (2011)
- 87 Radiation Dosimetry and Image Quality Assessment in Computed Tomography (2012)
- 88 Measurement and Reporting of Radon Exposures (2012)
- 89 Prescribing, Recording, and Reporting Brachytherapy for Cancer of the Cervix (2013)
- 90 Key Data for Ionizing-Radiation Dosimetry: Measurement Standards and Applications (2014)

COLLABORATION

COLLABORATIONS

Professional societies, government agencies and departments, national laboratories and statutory organizations, the US National Council on Radiation Protection (NCRP), international organizations including the International Atomic Energy Agency (IAEA), World Health Organization (WHO), the International Commission on Radiological Protection (ICRP), the United Nations Scientific Committee on the Effects of Atomic Radiation (UNSCEAR), the International Organization for Standardization (ISO), the International Bureau of Weights and Measures/*Bureau International des Poids et Mesures* (BIPM) and the International Committee for Weights and Measures/*Comité International des Poids et Mesures* (CIPM).

Evolution of radiation units

EVOLUTION OF RADIATION UNITS (ICRU RECOMMENDATIONS)					
QUANTITY		UNIT			DATE
Name	Symbol	Unit	Special name	Symbol	
Exposure	X	1 e.s.u. per 0.001293 g of air	röntgen	r→R	1928
Absorbed dose	D	erg g ⁻¹			1950
Activity	A	3.7 × 10 ¹⁰ s ⁻¹	curie	Ci	1953
Absorbed dose	D	100 erg g ⁻¹	rad	rad	1953
Fluence	Φ	cm ⁻² or m ⁻²	(reciprocal area)	(SI)	1962
Dose equivalent	H	100 erg g ⁻¹	röntgen equivalent man	rem	1971
Absorbed dose	D	J kg ⁻¹	gray	Gy (SI)	1974
Activity	A	s ⁻¹	becquerel	Bq (SI)	1974
Dose equivalent	H	J kg ⁻¹	sievert	Sv (SI)	1977

Volume 13 No 1-2 2013

ISSN 1473-4651 (print)
ISSN 1473-3422 (online)

Journal of the ICRU

ICRU REPORT 89

Prescribing, Recording, and Reporting Brachytherapy for Cancer of the Cervix

OXFORD
UNIVERSITY PRESS



OXFORD UNIVERSITY PRESS

INTERNATIONAL COMMISSION ON
RADIATION UNITS AND
MEASUREMENTS

- In the late 1950s the ICRU started publishing reports on an irregular basis - on average two to three a year.
- In 2001 the publication cycle was regularised and reports are now published bi-annually under the banner "Journal of the ICRU"

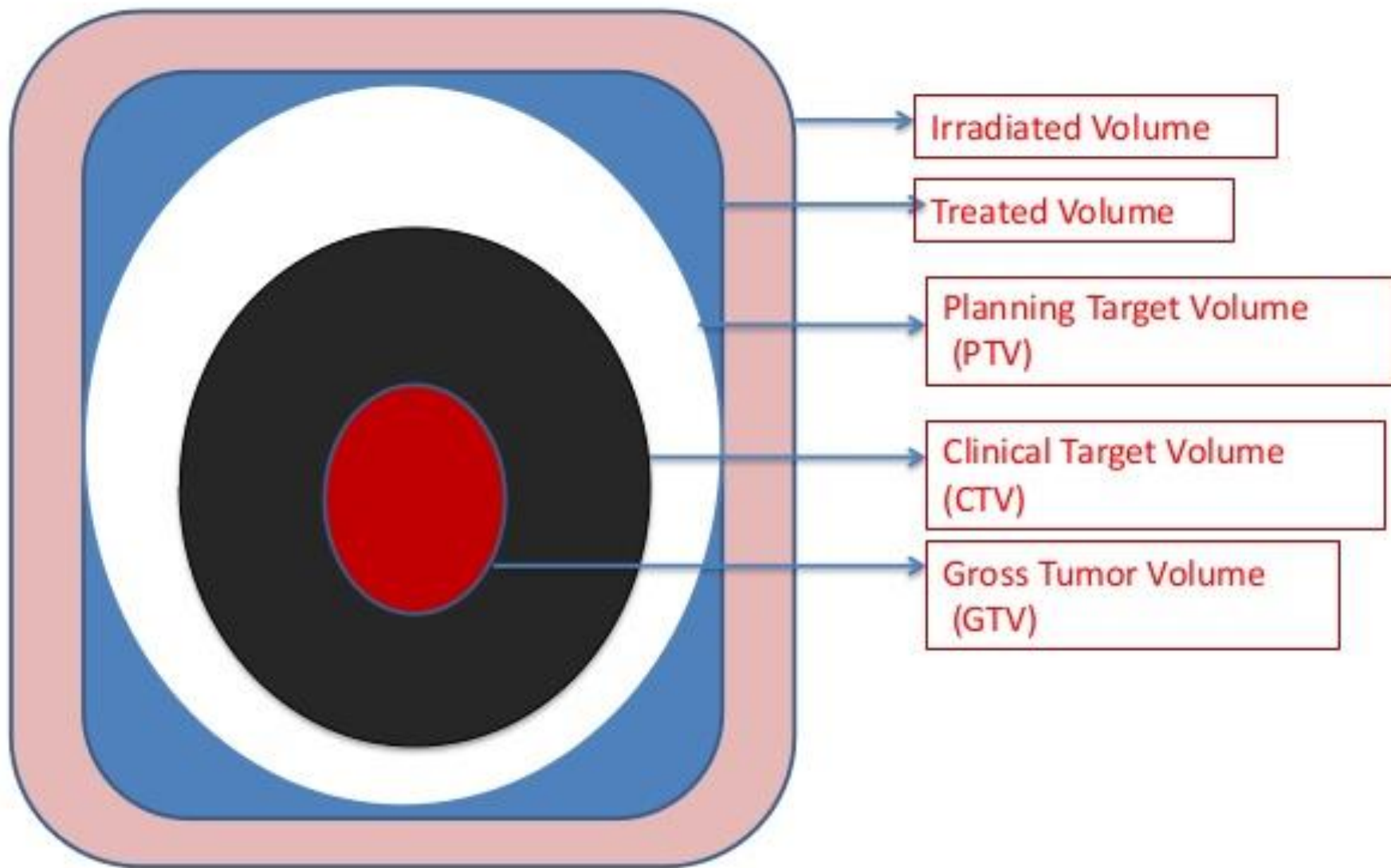
ICRU Report 38

**Dose and Volume Specification for Reporting
Intracavitary Therapy in Gynecology**

ICRU REPORT 50

Prescribing, Recording, and
Reporting Photon Beam Therapy

ICRU 50



ICRU Report 58

Dose and Volume Specification for Reporting
Interstitial Therapy

ICRU Report 60

Fundamental Quantities and Units for Ionizing
Radiation

ICRU Report 62

Prescribing, Recording and
Reporting Photon Beam Therapy

ICRU REPORT 71

Prescribing, Recording, and
Reporting Electron Beam Therapy

ICRU Report 76

Measurement quality assurance for
ionizing radiation dosimetry

ICRU Report 78

Prescribing, Recording, and Reporting Proton-
Beam Therapy

ICRU Report 83

**Prescribing, Recording, and Reporting
Intensity-Modulated Photon-Beam
Therapy IMRT**

ICRU REPORT 84

PREGNANCY AND MEDICAL RADIATION

ICRU Report 85a-Revised

Fundamental Quantities and Units for Ionizing
Radiation

ICRU Report 89

**Prescribing, Recording, and Reporting
Brachytherapy for Cancer of the
Cervix**

ICRU Report 91

**Prescribing, Recording, and Reporting of
Stereotactic Treatments with Small
Photon Beams**

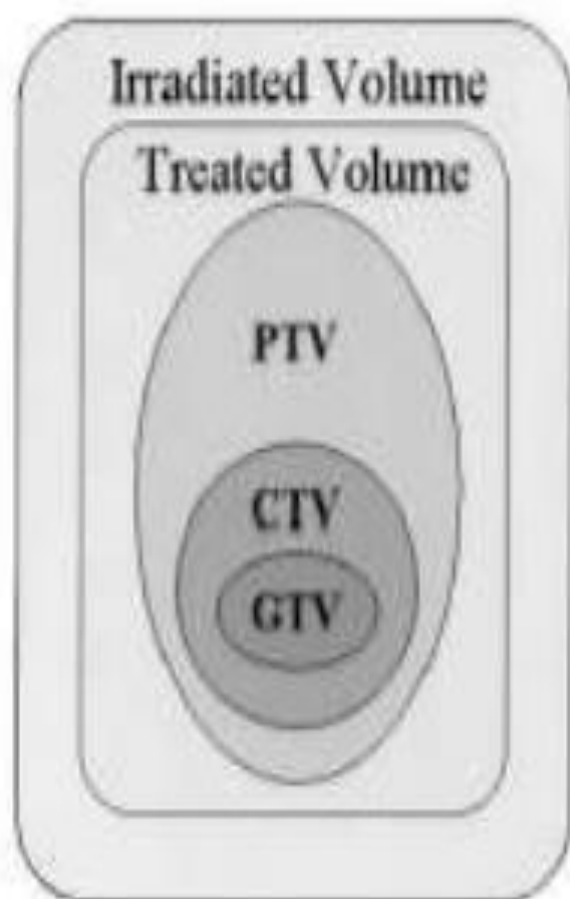
CLASSIFICATION OF ORGANS AT RISK

- Classified as :
 - ✓ **Serial** – organ is a continuous unit and damage at one point will cause complete damage of the organ (**spinal cord, digestive system**). So even point dose is significant.
 - ✓ **Parallel** – organ consists of several functional units and if one part is damaged, the rest of the organ makes up for the loss (**lung, bladder**). Dose delivered to a given volume or average/mean dose is considered
 - ✓ **Serial-parallel** – **kidney** (glomerulus- parallel, tubules-serial), **heart** (myocardium- parallel, coronary arteries-serial).

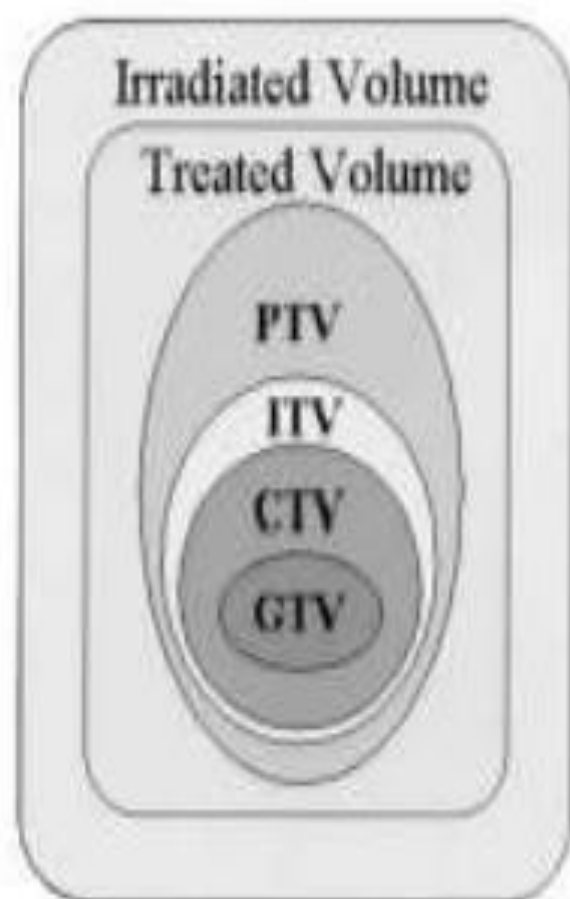
TUMOR VOLUME DELINEATION



(A) ICRU 29



(B) ICRU 50



(C) ICRU 62

VOLUME/MARGIN

REFERENCE POINT AND COORDINATE SYSTEM (1)

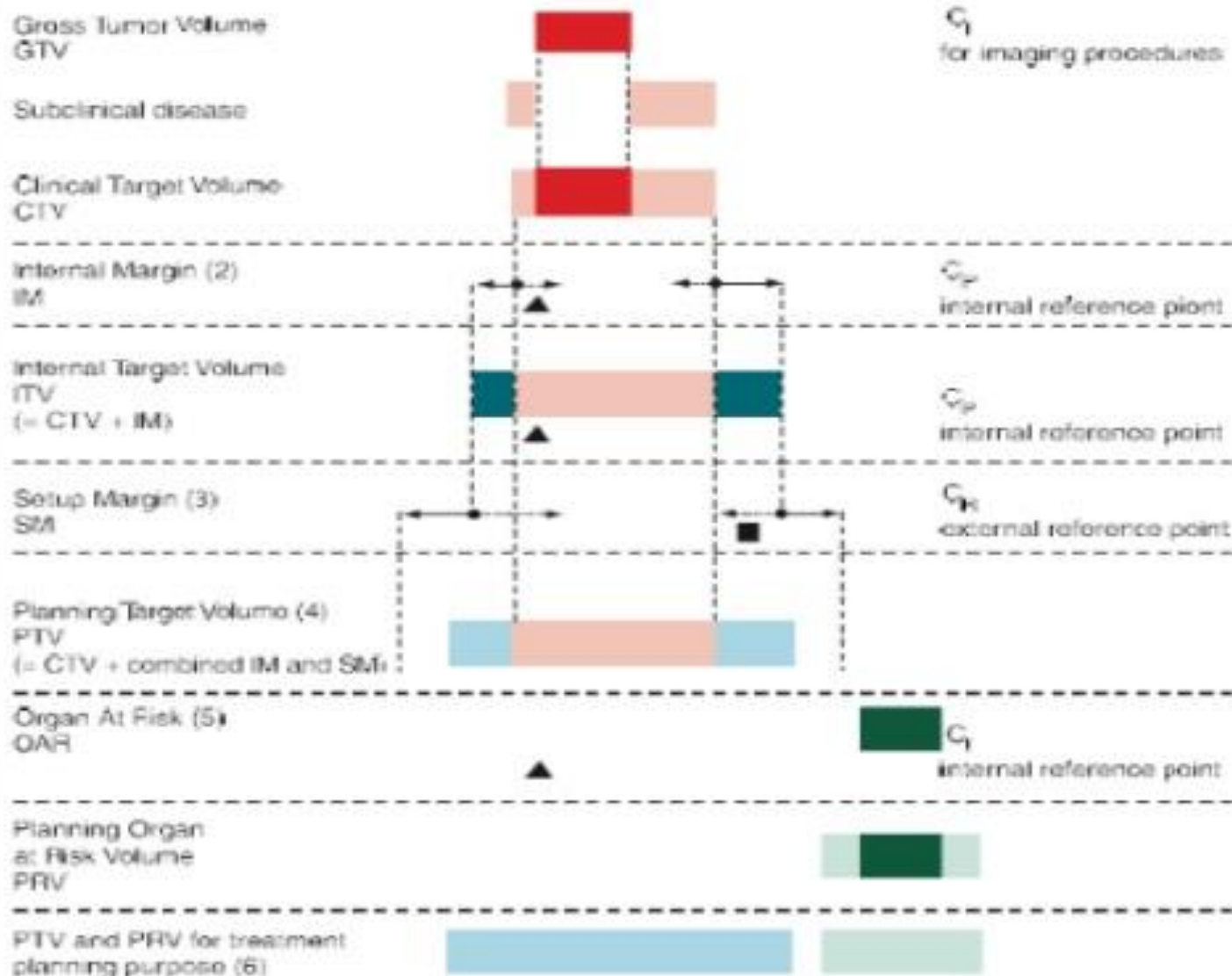
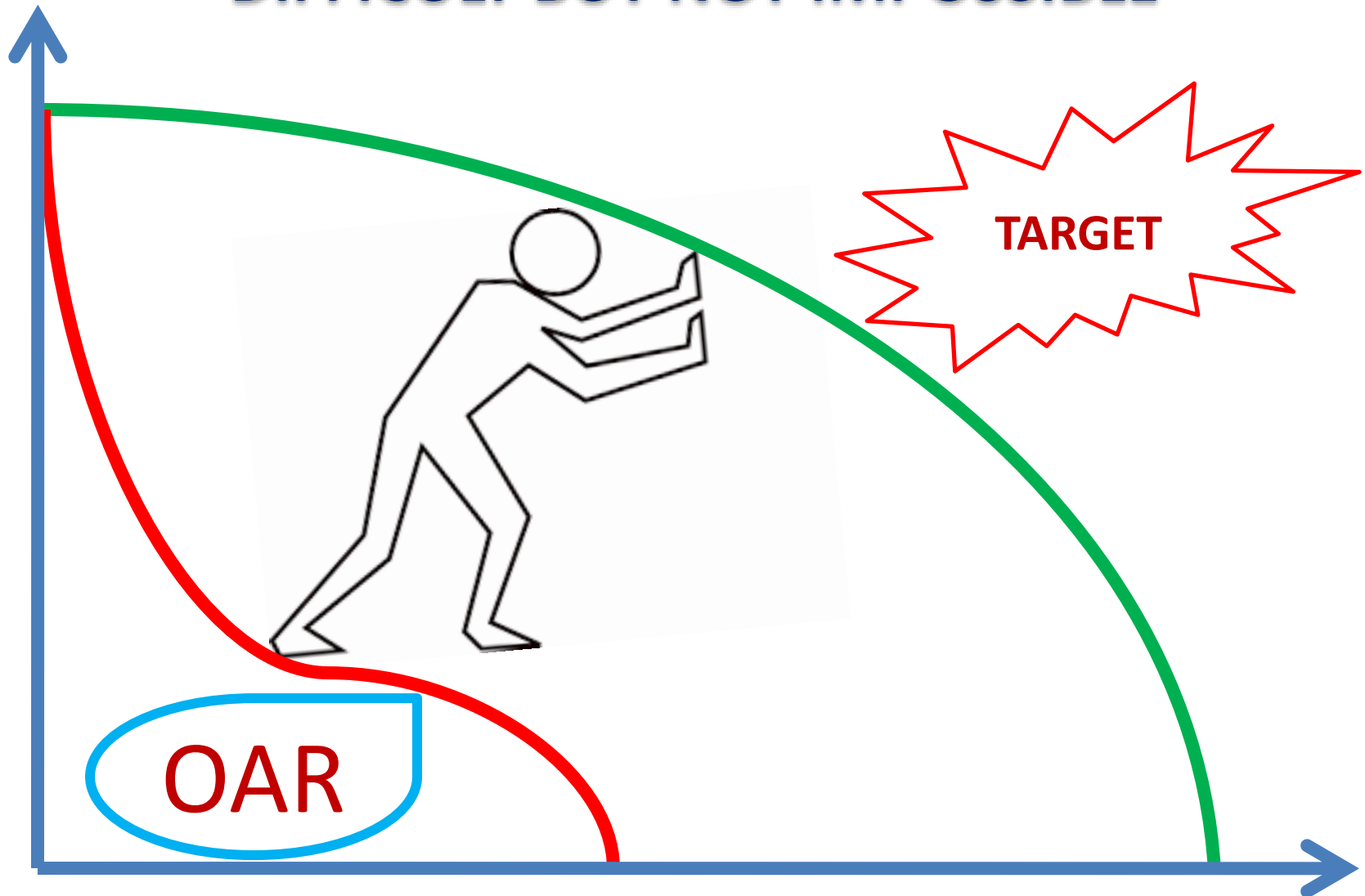


Fig. 3.21 Treatment volumes according to the ICRU-62 report

GRAPHICS

- These are used to delineate the different volumes and the other landmarks.
- These are in different colors for an easy and uniform interpretation.
- The convention recommended and used in ICRU 62 are:
 - GTV - Dark Red
 - CTV – Light Red
 - ITV – Dark Blue
 - PTV – Light Blue
 - OR – Dark Green
 - PRV – Light Green
 - Landmarks - Black

PUSHING BACKWARD AND FORWARD AT A TIME DIFFICULT BUT NOT IMPOSSIBLE



SUMMARY

- ICRU REFINING US
- COMES WITH NEW REPORTS
- ORGANIZES US
- MANY ROLES BEYOND RADIATION
- CHARITY ORGANISATION-NON PROFITABLE
- DOING BETTER FOR BETTER TREATMENT

**IGNORE *QUALIFIABLE* METRICS AND
SPEND EFFORTS IN QUANTIFIABLE
MEASURES. TO PROPERLY MEASURE
SUCCESS, WE NEED TO FOCUS
ON *OUTCOMES*.**

LONG LIVE ICRU
LONG LIVE ICRO





**Thank you for your
attention!**

**Questions and comments
are welcome!**