

Endometrial Cancer Chemotherapy

- Loco regional Endometrial Cancer
 - Low Risk
 - Stage IA, grade 1
 - Intermediate Risk
 - IA, IB, II
 - High Risk
 - Stage III
- Metastatic disease

Endometrial Carcinoma

- High Risk Disease
 - Stage III
 - Surgery alone Relapse rates > 50%
- GOG Protocol 122
 - Stage III-IV disease
 - Cytoreductive Surgery followed by
 - WAI
 - Or Chemotherapy

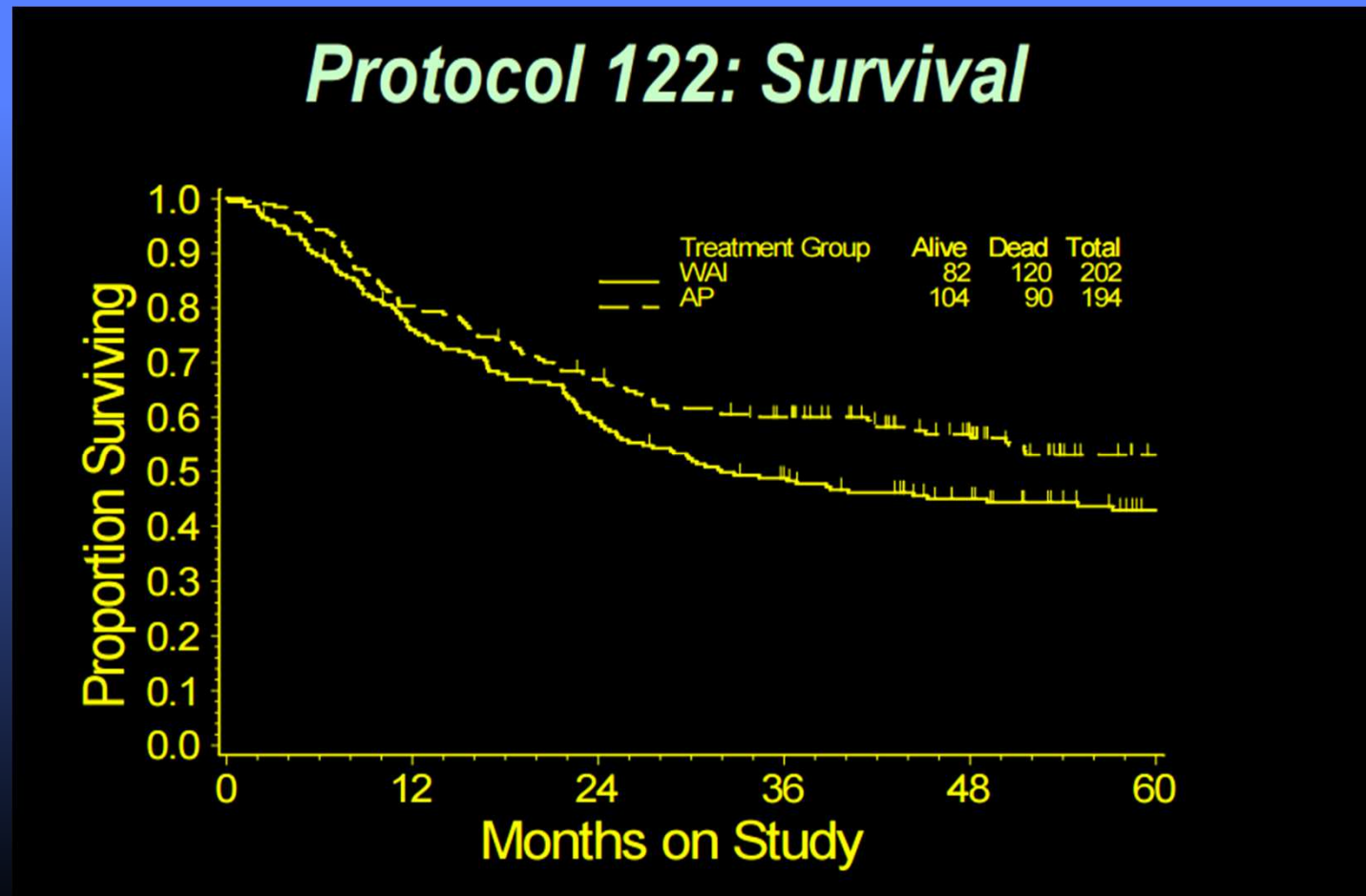
Endometrial Carcinoma

Chemotherapy Active Agent (>15% RR)

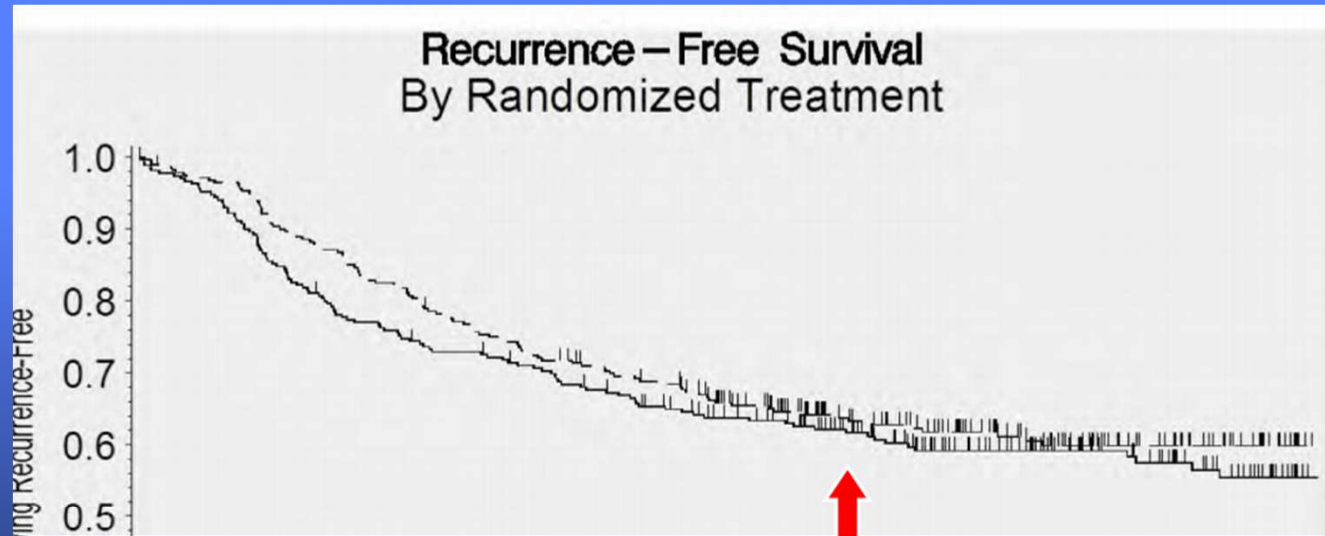
<u>Agent</u>	<u>Pts.</u>	<u>RR</u>
Doxorubicin	298	27%
Epirubicin	27	26%
Cisplatin	86	29%
Carboplatin	52	31%
Paclitaxel	47	36%

GOG 122

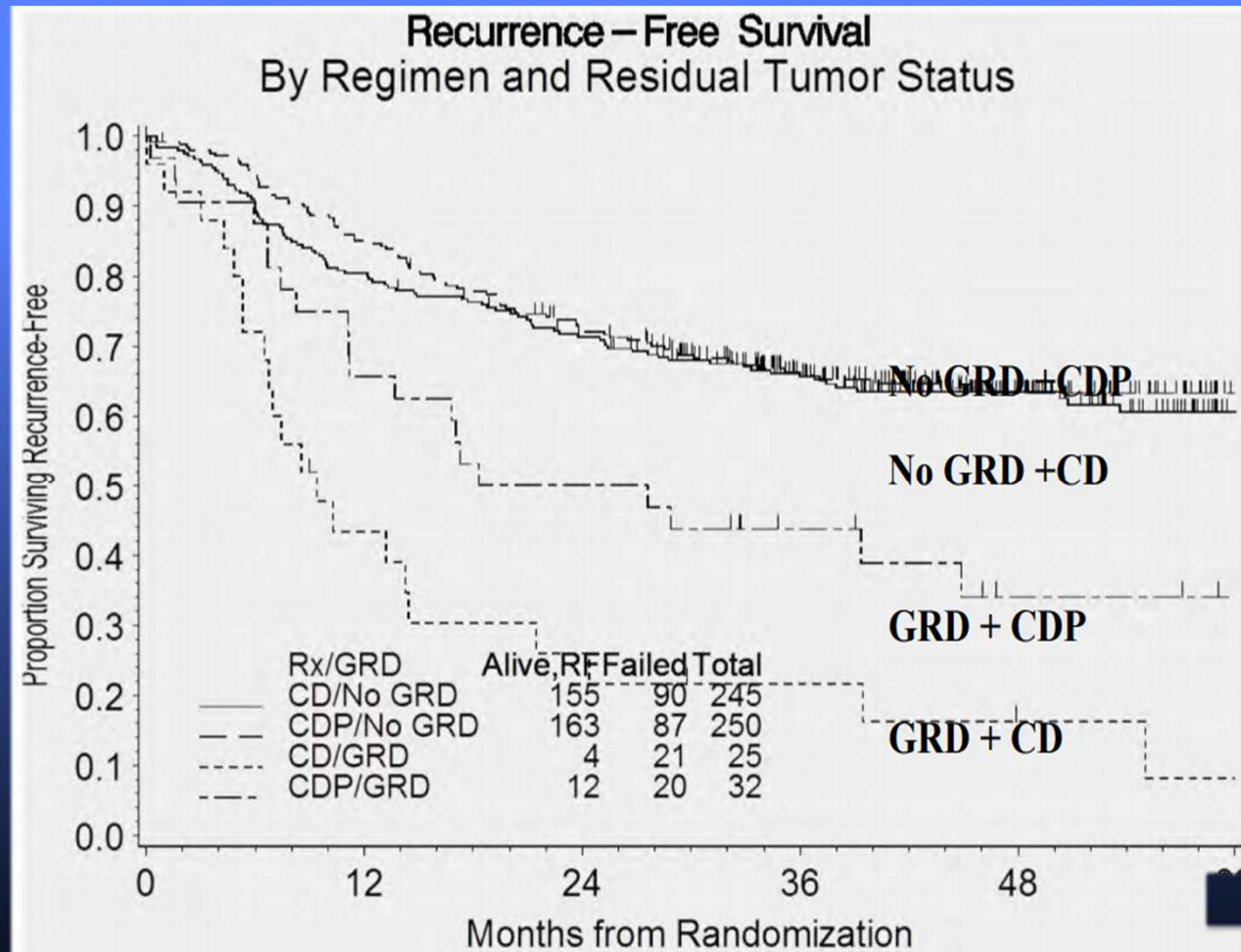
Adriamycin + Platinum better than WAI



Two Drugs versus Three Drugs

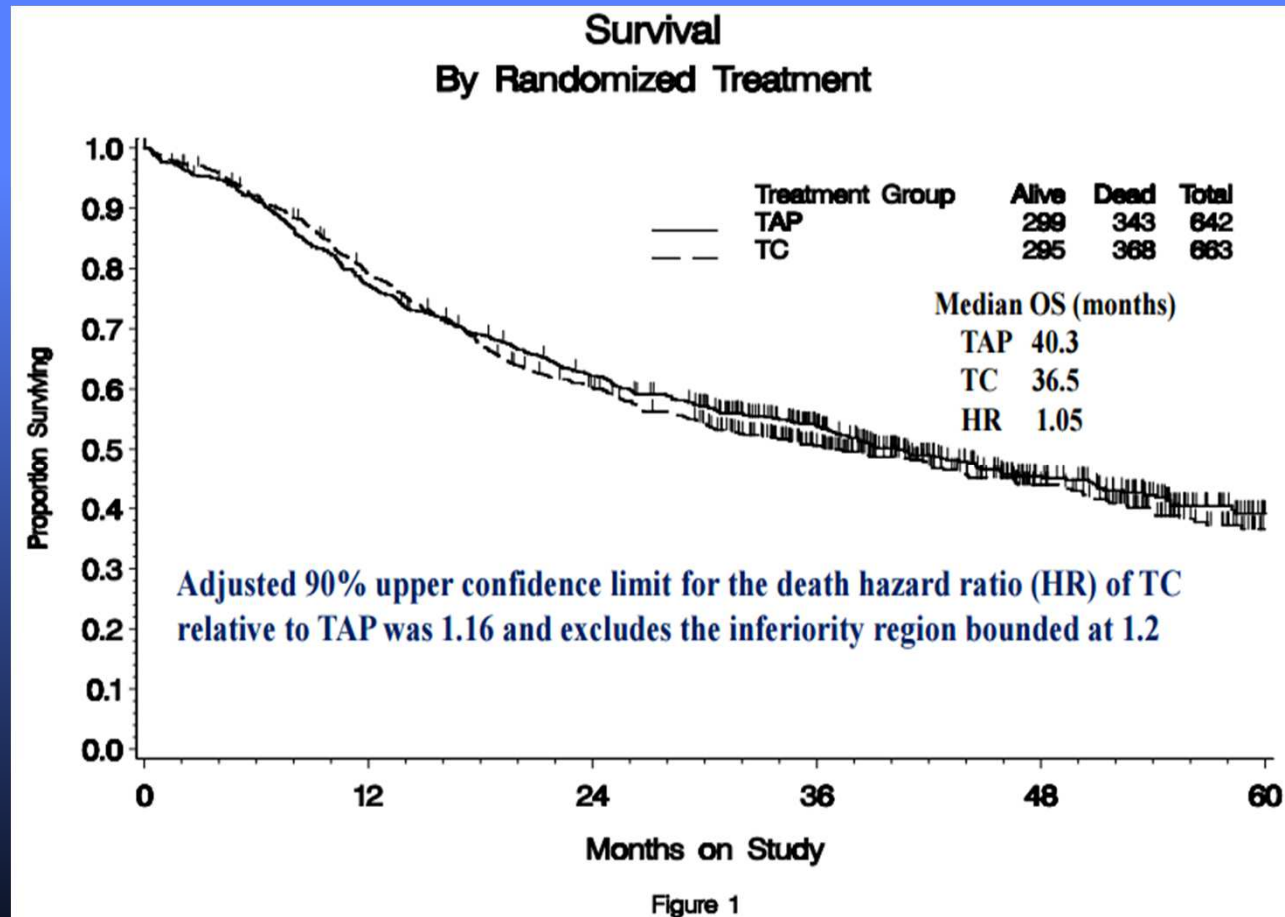


Three drugs better if Gross Residual Disease



GOG # 209

Three Drugs versus Two Drugs

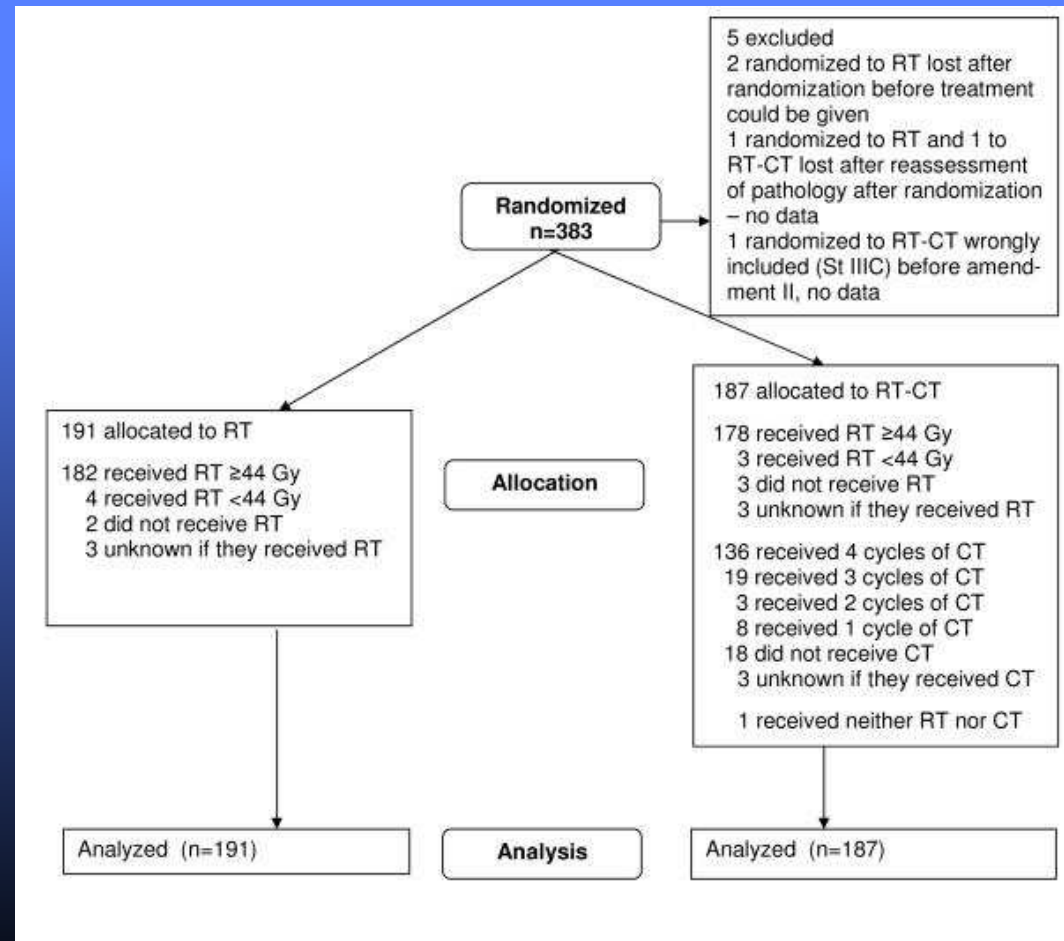


NSGO EC-9501/EORTC 55991

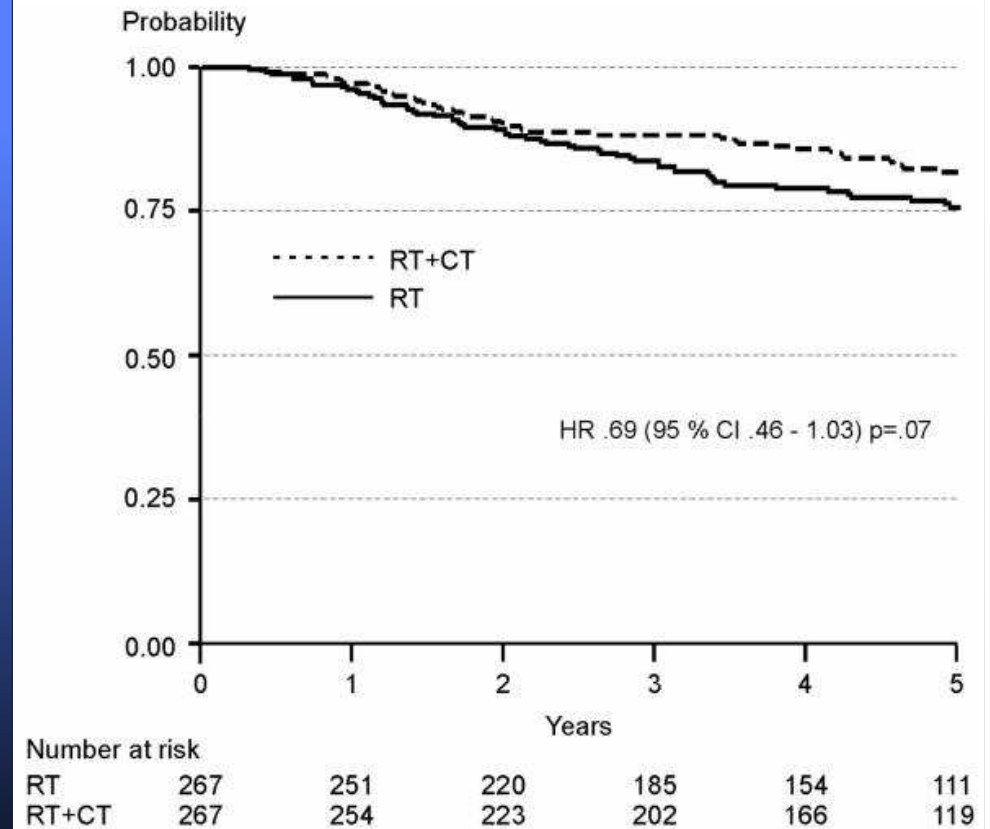
RT vs CT RT in operable endometrial cancer

Cis+ Dox, CDP, Pacli+carbo

- Stage I,
- Stage II occult
- Stage IIIA
- Stage IIIC
- R0 resection must
- Serous
- clear cell
- anaplastic



Combined Analysis NSGO/EORTC/MANGO ILIADE



Endometrial Carcinoma

- Progestational Agents

Receptor	Response	PFI	Survival
ER+ PR +	40%	8.5m	13.5m
ER+ PR-	12%	4.5m	9.0m
ER- PR-	12%	2.5m	9.5m
Overall	18%	4.0m	10.5m

Endometrial Cancer

biological agents other than hormones

- *Anti-angiogenesis*
 - *Bevacizumab with chemotherapy*
 - *NRG/GOG 86P trial, MITO END 2 trial*
 - *More evidence needed*
- *Angiokinase inhibitors*
 - *Brivanib*
 - *Nintedanib*
- *Her2 directed therapies*
- *PI3K/PTEN/MTOR inhibitors*

Endometrial Carcinoma

- Treatment by Disease Characteristics
 - Locoregional Disease
 - Low risk Surgery Alone
 - Intermediate Risk Surgery +/- Vaginal RT
 ? Chemotherapy
 - High Risk Surgery + Chemotherapy
 ? RT
 - Disseminated Disease Chemotherapy